

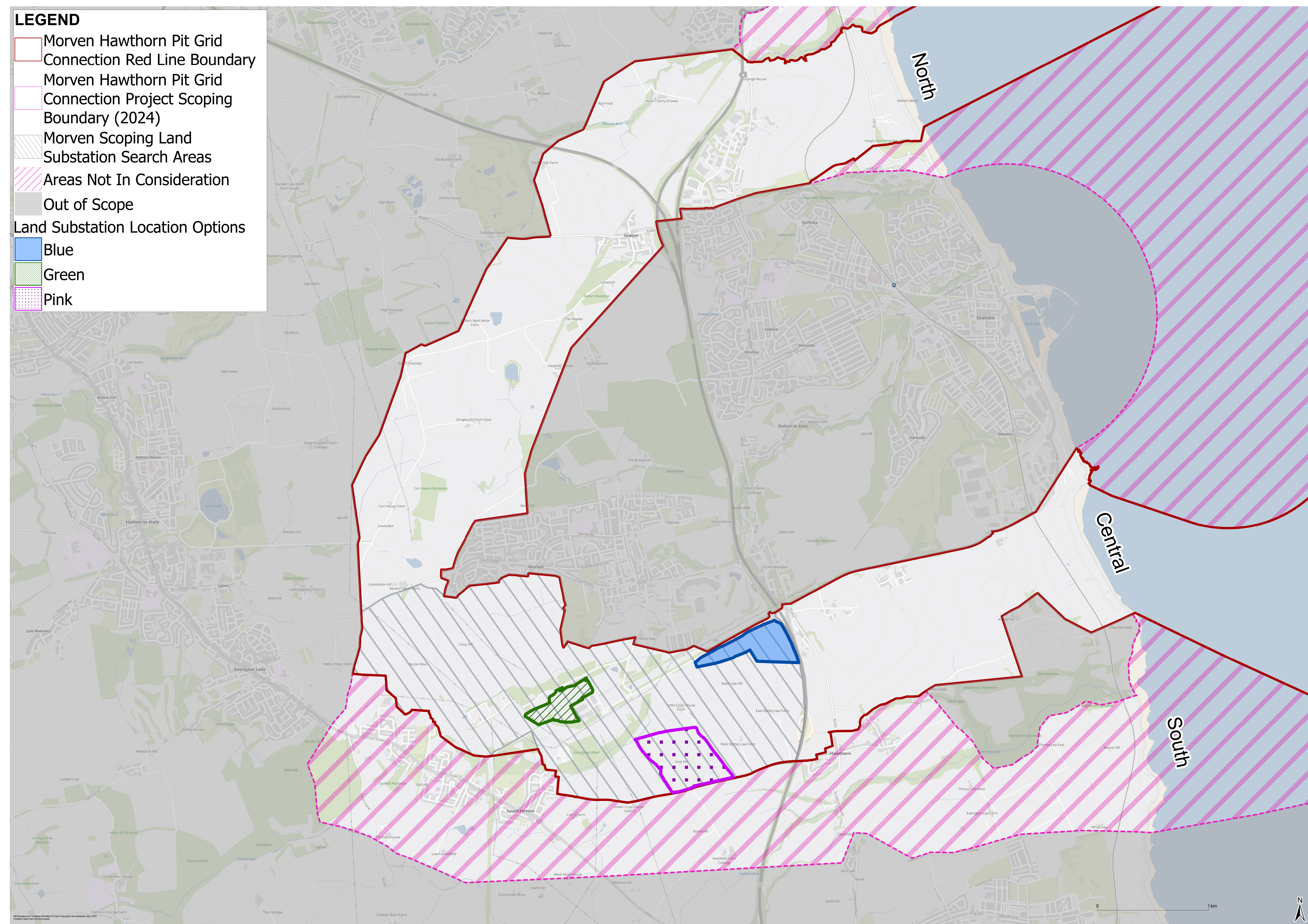
Onshore corridor

Since the last consultation, we have removed the South cable landfall option.

The corridors that we previously engaged on are shown on the map, with a red line showing the area still in consideration. The two remaining corridors (North and Central) connect the two cable landfall search areas and the substation search area.

We aim to reduce our options to a single corridor by the time we hold our next round of consultation and publish our Preliminary Environmental Information Report (PEIR).

Cable corridor options



We welcome community feedback on the proposed cable routes as part of this round of consultation.